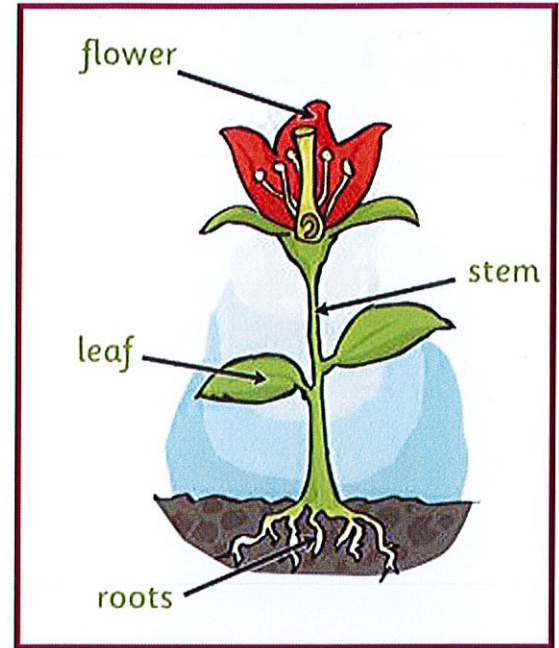


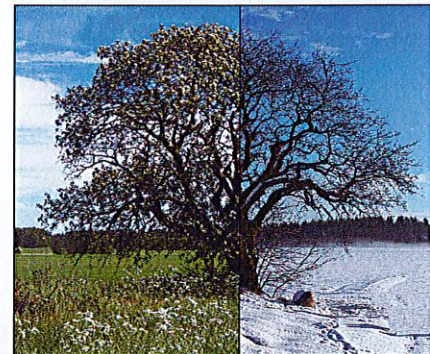
# St Andrew's Knowledge Organiser - Taking Flight

## Key Vocabulary

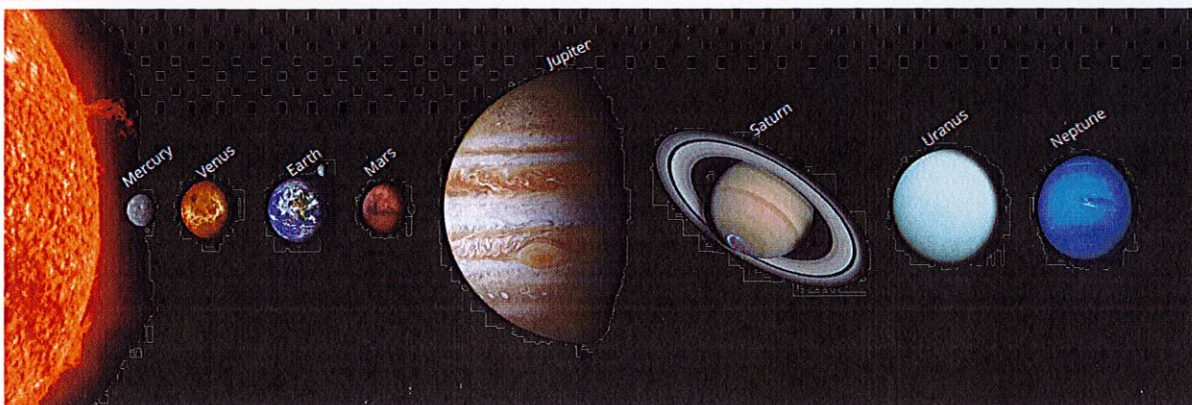
<b>Roots</b>	<b>Roots</b> take in water and nutrients from the soil.
<b>Stem</b>	The <b>stem</b> holds the plant up and carries water and nutrients from the <b>roots</b> to the <b>leaves</b> and <b>flowers</b> .
<b>Leaves</b>	<b>Leaves</b> catch sunlight to make energy.
<b>Flowers</b>	<b>Flowers</b> attract insects and birds.
<b>Petals</b>	<b>Petals</b> are the colourful part of the flower.
<b>Fruit</b>	<b>Fruit</b> contains the plant's seeds.
<b>Seeds</b>	<b>Seeds</b> grow into new plants.
<b>Bulb</b>	<b>Bulbs</b> grow into new plants.
<b>Deciduous</b>	A <b>deciduous</b> tree loses it's leaves each year.
<b>Evergreen</b>	An <b>evergreen</b> tree keeps it's green leaves all year round, even in winter.



A deciduous tree loses it's leaves in the autumn and winter and grows them again in the spring.



**Forces** - A force is a push or a pull. Forces can make something move, change their speed or change their shape. **Gravity** is a pull force that keeps us on the ground, when we jump gravity pulls us back down to the ground.



## Counting in 2's:

2 4 6 8 10 12 14 16 18 20 22 24 26 28 30

## Counting in 5's:

5 10 15 20 25 30 35 40 45 50 55 60 65

## Counting in 10's:

10 20 30 40 50 60 70 80 90 100 110 120

## The season - **Spring**

In **spring**, the **weather** begins to get warmer. Flowers and trees begin to grow again. Lots of baby animals are born in the spring time.

**March**, **April** and **May** are the months in **Spring**.