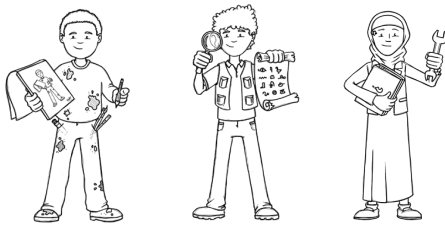


# Year 6 Parent Planner - Spring Term 4 2026 - Who were the greater engineers:

## The Ancient Britons or the Victorians?



### AREAS OF LEARNING



#### As **Readers** we will...

- Reading 'The Wind in the Wall' as our class text, this is rich in vocabulary and we will analyse the literary feature selected by the author.
- We will develop our inferencing skills further, focusing on answering 'What does....suggest about....?' and 'What is the effect of.....' questions.

#### As **Writers** we will...

- Use our class text to develop our ability to use figurative language. We will use this skill to describe a setting and a character.
- use the subjunctive to give formal advice.; use a range of adverbials to write an action scene; use passive voice to build tension ; plan a Gothic narrative
- Analyse the poem 'The Raven' by Edgar Allan Poe.

#### As **Mathematicians** we will...

- Continue regular arithmetic practice, thinking about mental and written calculations.
- Calculate and find percentages of amounts; solving contextual and reasoning problems; solve problems involving the relative sizes of two quantities where missing values can; solve use of percentages for comparison; solve problems involving similar shapes where the scale factor is known or can be found.

#### As **Historians** we will...

- Understand the engineering changes in Britain from the Stone Age to the Iron Age and compare them to the engineering achievements of the Victorian era in order to compare them.
- Understand where both eras sit on a timeline; consider how life changed between the stone age and iron age; what the most significant achievements of both eras were.

#### As **Artists** we will ....

- Discover great architects and designers through history.
- We will study the illustrator of 'The Wind in the Wall' and create our own piece inspired by Rovina Cai.

#### In **PSHE** we will...

- Understand media bias, including social media;
- explain that what 'environmentally sustainable' living means and give examples of how we can live in a more 'sustainable' way.
- explain the advantages and disadvantages of different ways of saving money.

#### As **Musicians** we will...

- children to explore rhythm work, creating and improvising off-beat (syncopated) rhythm patterns and melodies, and develop a polished group performance.

#### As **Sportspeople** we will...

- Develop our fielding and batting skills in cricket; developing our understanding of the rules and a range tactics.

#### As **Computer Scientists** we will...

- Learn how to use spreadsheets by collecting data, formatting a spreadsheet, understanding how to use formulas, and plan and calculate the cost of an event using a spreadsheet.

The key question we will investigate in RE is as follows: How does the Triple Refuge help Buddhists in their journey through life?









